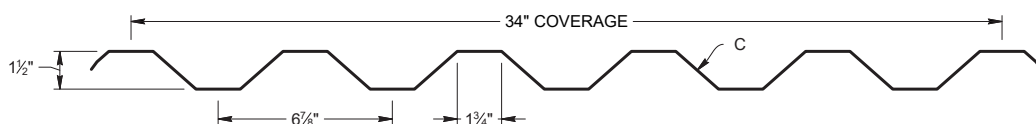
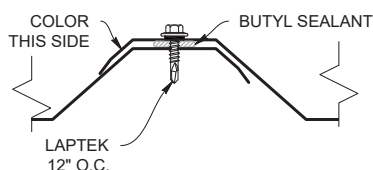
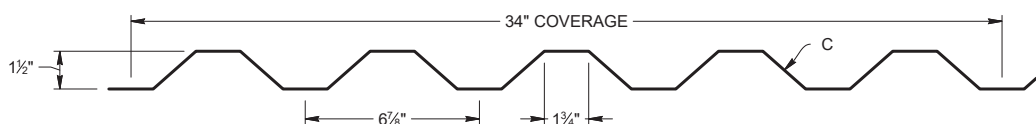
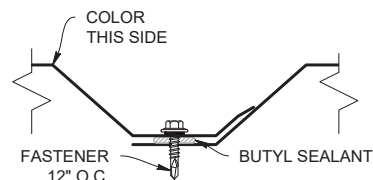


ROOF PROFILE





WALL PROFILE



KEY FEATURES

- 26, 24 and 22 Tru-Gauge™ and .032" Aluminum
- Custom 20 & 18 Tru-Gauge™ and .040" Aluminum (*please inquire*)
- 1:12 minimum pitch recommended when installed with butyl sealant
- Custom lengths 1' to 45' (*For longer length panels, please inquire*)
- Long length flashings available up to 20' 11"
- Standard trim, custom trim and accessory packages available
- Color matched neoprene washered screws
- Roof and Vertical or Horizontal Wall application
- Structural panel that will span up to 6'
- Manufactured in Salem OR
- OverEZee™ Retro-fit systems available

TESTING

-  ICC-ESR #5045 & #5046 with CBC-CRC Supplement
-  Code compliance UL Evaluation Report UL ER #25913-01. Construction No. 137, 244
- UL 580 Class 90 - Wind Uplift
- UL 790 Class A (ASTM E108) - Fire rated
- UL 2218 Class 4 - Impact (hail) rated
- ASTM E1680 - Air infiltration (roof)
- ASTM E1646 - Water infiltration (roof)
- ASTM E1592 - Negative structural uniform static air pressure
- ASTM E330 - Positive structural uniform static air pressure
- ASTM E331 - Water infiltration (wall)
- ASTM E283 - Air infiltration (wall)
- ASTM A653/A924 - G90 Galvanized
- ASTM A792 - Zincalume/Galvalume AZ-50/55
- ASTM B209 - Aluminum Substrate

MATERIAL SPECIFICATIONS

- 24 Tru-Gauge™ Kynar 500® Painted Steel .0236" (Thickness prior to painting)
- ▲ 22 Tru-Gauge™ Kynar 500® Painted Steel .029" (Thickness prior to painting)
- ♦ .032" Kynar 500® Painted Aluminum
- 24 Tru-Gauge™ G-90 Galvanized or AZ-50
- 24 and 22 Tru-Gauge™ bare Zinalume® Plus AZ-55 (No finish warranty – 25 yr. perforation warranty)
- G-90 Galvanized or AZ-50
- .032" & .040" Kynar 500® Painted Aluminum
- 24 Tru-Gauge™ Bonderized
- 22 gauge Rusteel Plus™ (A606) (No finish warranty – no perforation warranty)
- Kynar 500® and substrate testing data available (See website)

SMP MATERIAL SPECIFICATIONS

- 26 Tru-Gauge™ ARMORTECH™ Painted Steel .019" (Thickness prior to painting)

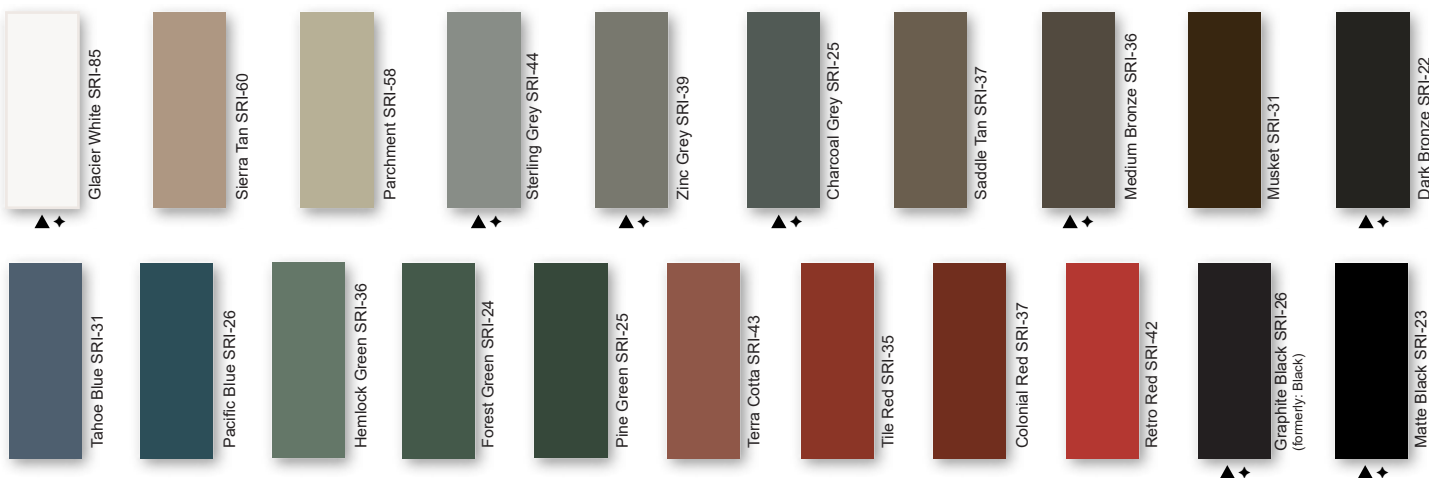
STANDARD COOL ARMORTECH™ SMP COLORS 40-Year Residential Manufacturer's Limited Warranty



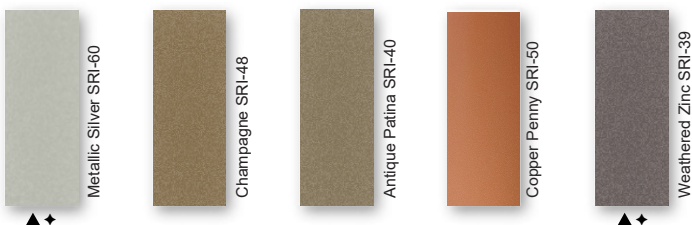
STANDARD COOL KYNAR 500® COLORS

40-Year Residential / 20 and 30 Year Commercial Manufacturer's Limited Warranty

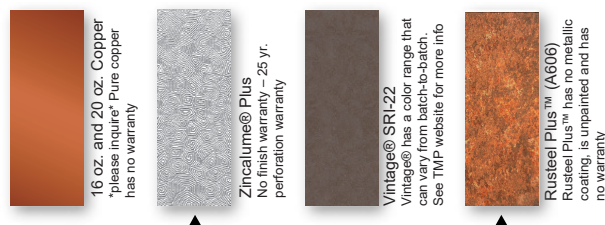
▲ .22 Tru-Gauge™ ♦ .032 Aluminum



PREMIUM METALLIC COOL KYNAR® COLORS



SPECIALIZED MATERIAL



These printed chips provide a close representation of the colors.

Metal samples are available upon request. Coatings are low gloss 10-15% sheen.
SRI = Solar Reflective Index. SRI values listed above are in accordance with ASTM E 1980 and are based on actual testing.***Oil canning is not a cause for material rejection***



Rev. Date 05-24