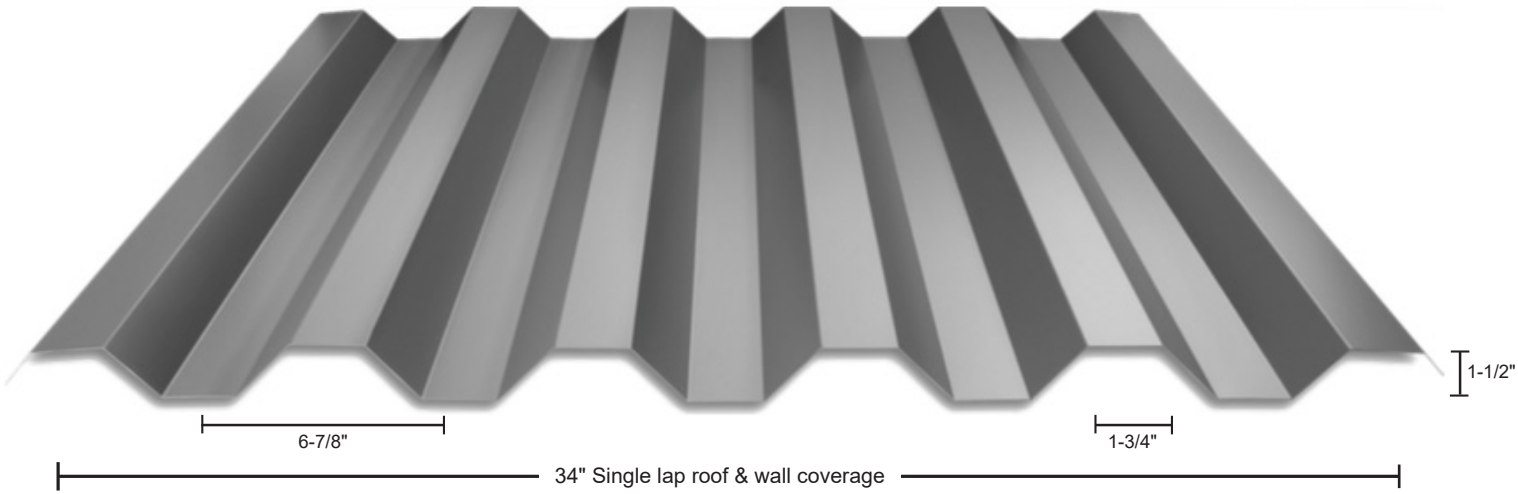
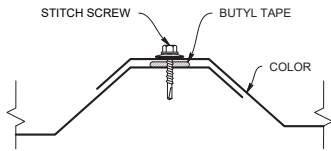


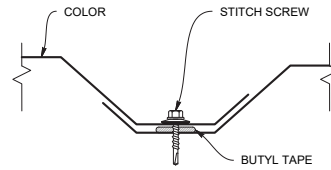
ES ICC EVALUATION SERVICE ICC-ESR #5045 and #5046



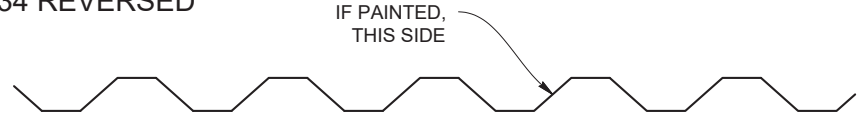
STANDARD LAP DETAIL



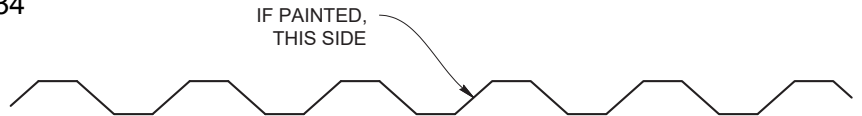
REVERSE LAP DETAIL





HR-34 REVERSED



HR-34



KEY FEATURES

- 26, 24 & 22 gauge Tru-gauge™ and .032" Aluminum (inquire for 18 and 20 gauge, and .040" aluminum)
- Manufactured in Riverside CA, Sacramento CA & Salem OR
-  ICC-ESR #5045 & #5046 with CBC-CRC Supplement
-  Code compliance UL Evaluation Report UL ER 25913-01
- Substrate: ASTM E1680, ASTM E283, ASTM E1646, ASTM E331
Air/Water: ASTM E1592, ASTM E330
- UL 790 Class A Fire rated and ASTM E108
UL 2218A Class 4 Impact (hail) rated
UL 580 class 90
- Custom lengths 1' to 45' (For longer lengths, please inquire)
- Structural panel that will span up to 6'
- Recommended minimum pitch 1:12 when used with field applied butyl mastic
- Long length flashings available up to 20'11"
- Panel is available in a wide variety of "Cool" baked on ArmorTech™ or "Cool" baked on Kynar 500® colors. Rusteel™ Plus (A606) and .032" Kynar 500® painted Aluminum
- Also available in 29 gauge Glacier White
- Easy-to-order standard and custom made trim and accessory packages available for specific project needs
- Color matched neoprene washers screws

Allowable Live Load in PSF			Span In Feet (steel only)					
SPAN TYPE	GAUGE	KSI	2'	2' 6"	3'	4'	5'	6'
SINGLE SPAN	22	50	806	516	358	202	129	90
DOUBLE SPAN	22	50	806	516	358	202	129	90
THREE OR MORE SPANS	22	50	1008	645	448	252	161	112
SINGLE SPAN	24	50	636	407	283	159	102	71
DOUBLE SPAN	24	50	627	401	348	157	100	70
THREE OR MORE SPANS	24	50	784	502	358	196	125	87
SINGLE SPAN	26	80	545	349	242	136	87	61
DOUBLE SPAN	26	80	514	329	229	129	82	57
THREE OR MORE SPANS	26	80	643	411	286	161	103	71

MATERIAL SPECIFICATIONS

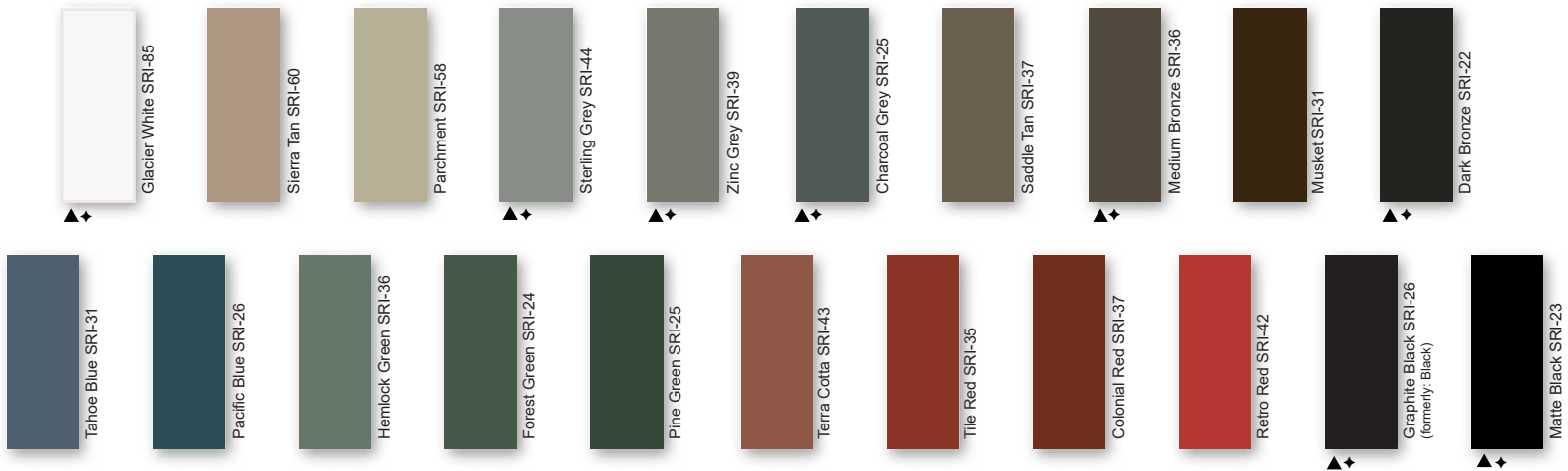
- 26 gauge ArmorTech™ Painted Steel
.019" (Thickness prior to painting)
G-90 Galvanized or AZ-50
- 24 gauge Kynar 500® Painted Steel
.0236" (Thickness prior to painting)
G-90 Galvanized or AZ-50
- 26, 24 & 22 gauge bare Zincolume® Plus, AZ-55
(No finish warranty – 25 yr. perforation warranty)
- ▲ 22 gauge Kynar 500® Painted Steel
.029" (Thickness prior to painting)
G-90 Galvanized or AZ-50
- ◆ .032" Kynar 500® Painted Aluminum
- 26 gauge bare Galvanized G-90
(No finish warranty – 25 yr. perforation warranty)
- 22 gauge Rusteel Plus™ (A606)
- Kynar 500® and substrate testing data available (See website)

STANDARD COOL ARMORTECH™ SMP COLORS
40-Year Residential Manufacturer's Limited Warranty

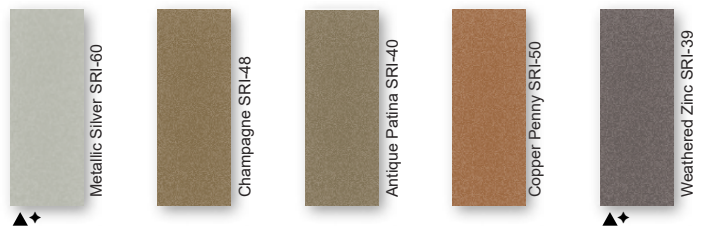


40-Year Residential / 20 and 30 Year Commercial Manufacturer's Limited Warranty

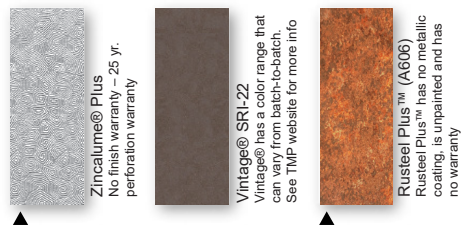
STANDARD COOL KYNAR 500® COLORS



PREMIUM METALLIC COOL KYNAR® COLORS



SPECIALIZED MATERIAL



These printed chips provide a close representation of the colors.
Metal samples are available upon request. Coatings are low gloss 10-15% sheen.
SRI = Solar Reflective Index. SRI values listed above are in accordance with ASTM E 1980 and are based on actual testing. ***Oil canning is not a cause for material rejection***

Standard Panels			
Gauge	Color	LBS SQFT	LBS LF
26	ArmorTech	1.02	2.92
24	Kynar	1.2	3.45
22	▲	1.51	4.33
.032 Alum	◆	.56	1.62

