

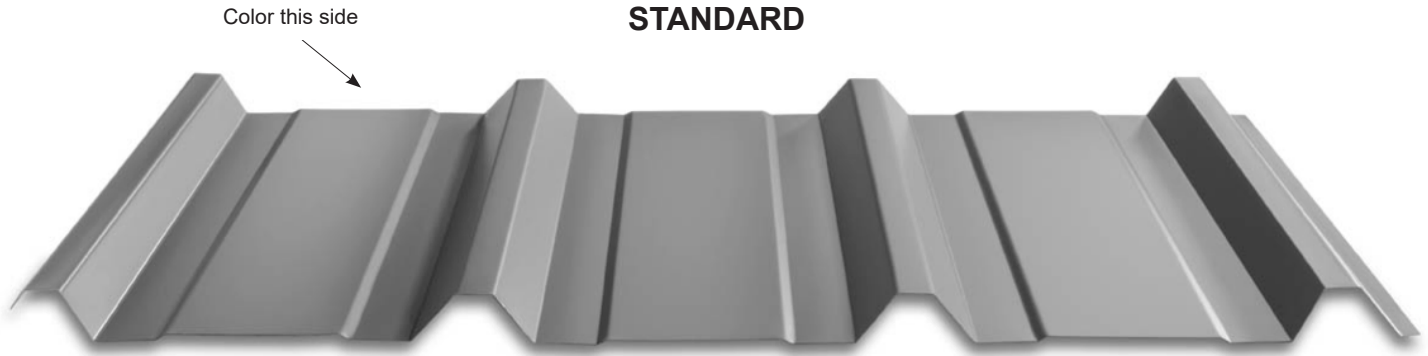


**CHAMPION METAL**  
a Taylor Metal Company

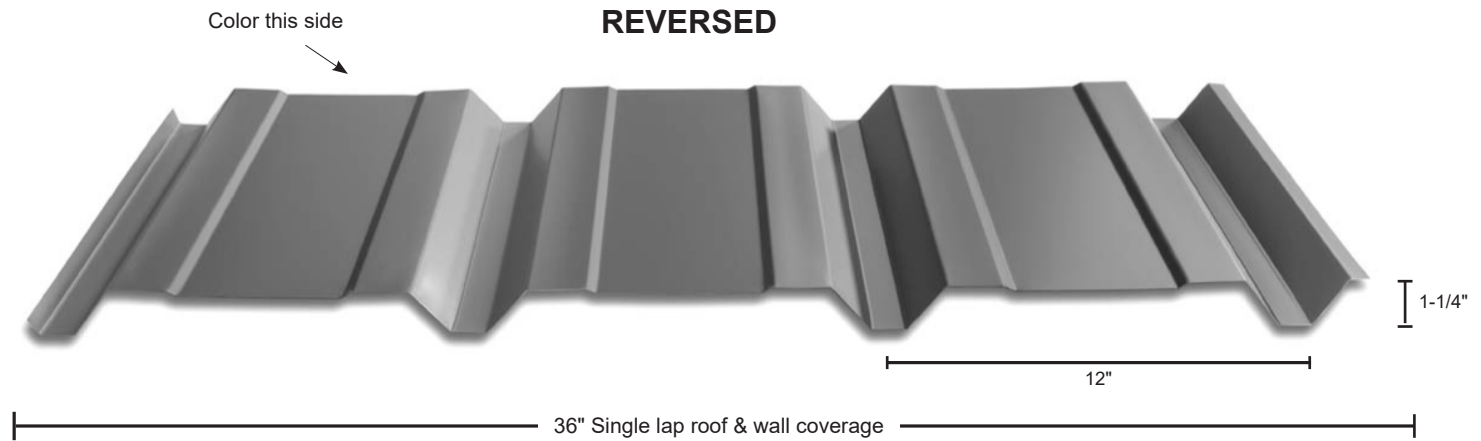
# Marion "R" Panel™

## ROOF AND WALL

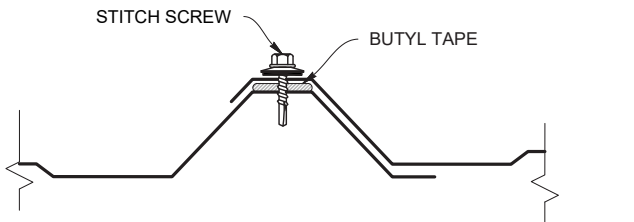
### STANDARD



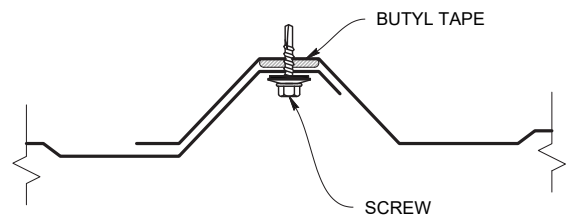
### REVERSED



### STANDARD LAP DETAIL



### REVERSE LAP DETAIL



## KEY FEATURES

- 26, 24 & 22 gauge Tru-Gauge™ and .032" Aluminum
- ASTM 653 and 792
- UL 790 Class A Fire rated  
UL 2218 Class 4 Impact (hail) rated
- UL 580 Class 90 Wind Uplift rated when attached to steel purlin
- Custom lengths 1' to 45' - No short length cut charge  
(For longer lengths, please inquire)
- Recommended minimum pitch 1:12 when installed with Butyl Mastic
- Fiberglass and Polycarbonate skylight panels available to match profile
- Panel is available in a wide variety of "Cool" baked on ArmorTech™ or "Cool" baked on Kynar 500® colors Rusteel Plus™ (A606) and .032" Kynar 500® Painted Aluminum
- Easy-to-order standard and custom made trim and accessory packages available for specific project needs
- Long length flashing available to 20'11"
- Color matched neoprene washered screws

**MATERIAL SPECIFICATIONS**

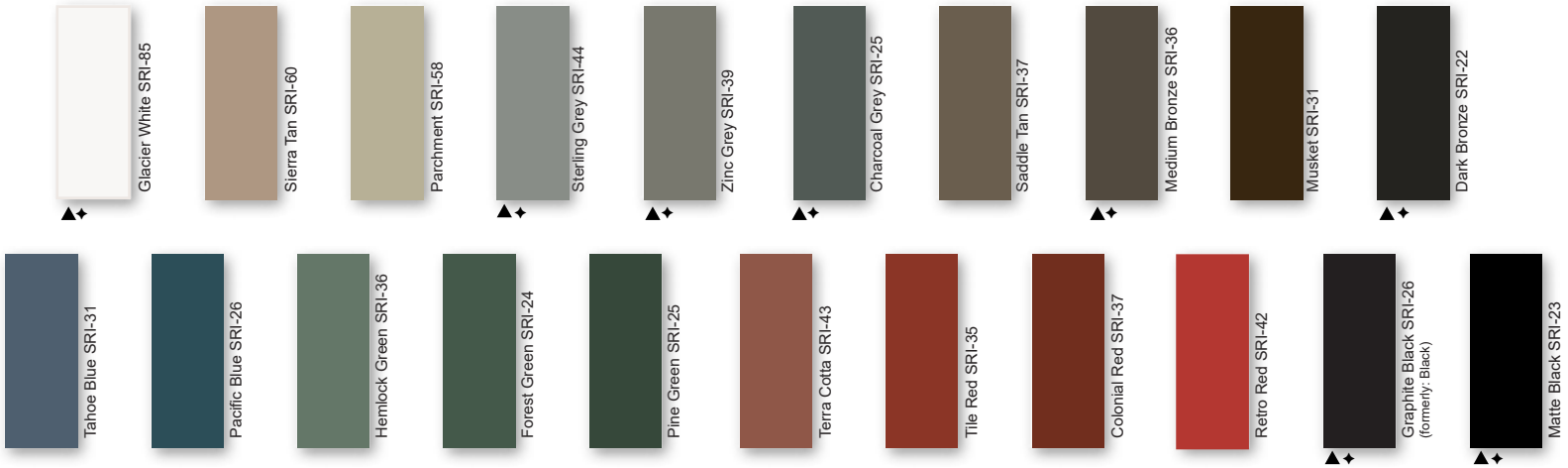
- 26 gauge ArmorTech™ Painted Steel .019" (Thickness prior to painting) G-90 Galvanized or AZ-50
- 26 and 24 gauge bare Zinalume® Plus AZ-55 (No finish warranty – 25 yr. perforation warranty)
- 26 gauge bare G-90 Galvanized (No finish warranty – no perforation warranty)
- 24 gauge Kynar 500® Painted Steel .0236" (Thickness prior to painting) G-90 Galvanized or AZ-50
- ▲ 22 gauge Kynar 500® .029" (Thickness prior to painting) G-90 Galvanized or AZ-50
- ♦ .032" Kynar 500® Painted Aluminum
- Kynar 500® and substrate testing data available (See website)

**STANDARD COOL ARMORTECH™ SMP COLORS**  
40-Year Residential Manufacturer's Limited Warranty

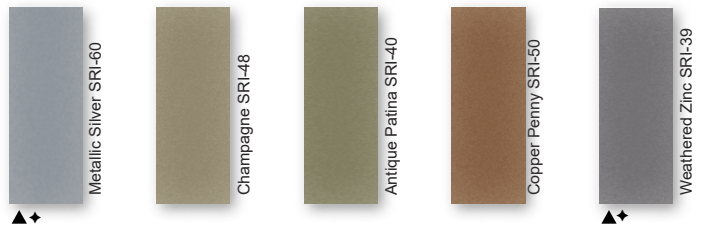


40-Year Residential / 20 and 30 Year Commercial Manufacturer's Limited Warranty

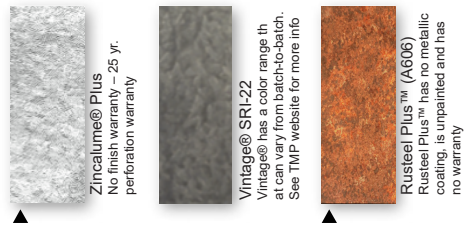
**STANDARD COOL KYNAR 500® COLORS**



**PREMIUM METALLIC COOL KYNAR® COLORS**



**SPECIALIZED MATERIAL**



These printed chips provide a close representation of the colors.  
Metal samples are available upon request. Coatings are low gloss 10-15% sheen.  
SRI = Solar Reflective Index. SRI values listed above are in accordance with ASTM E1980 and are based on actual testing. \*\*\*Oil Canning is not a cause for material rejection\*\*\*

Standard Panels			
Gauge	Color	LBS SQFT	LBS LF
26	ArmorTech	.85	2.7
24	Kynar	1.19	3.58
22	▲	1.51	4.33
.032 Alum	♦	.56	1.62

