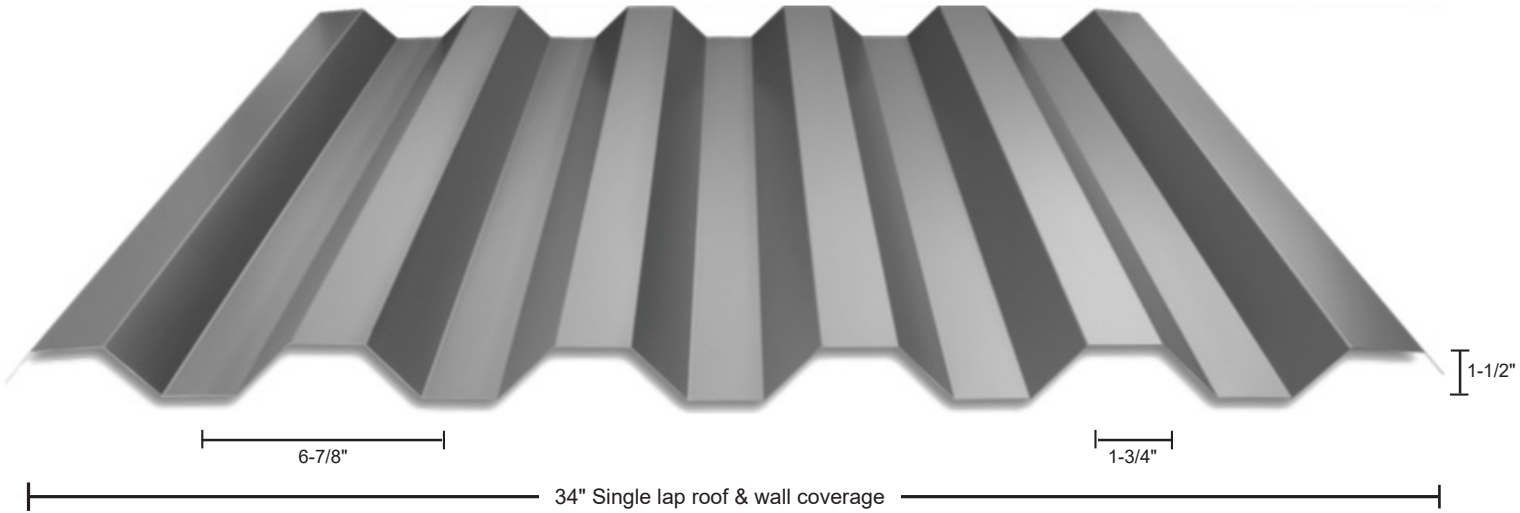


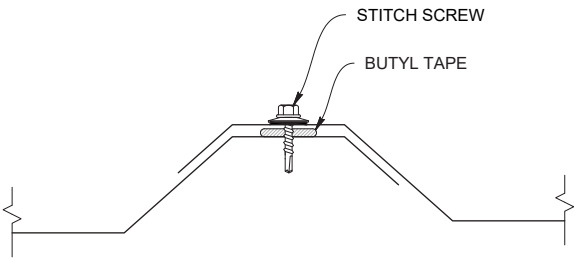


CHAMPION METAL
a Taylor Metal Company

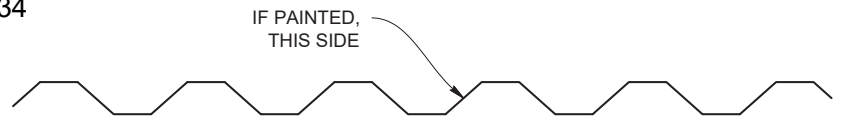
HR-34™
ROOF AND WALL



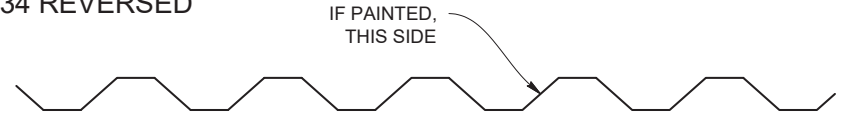
LAP DETAIL



HR-34



HR-34 REVERSED



KEY FEATURES

- 26, 24 & 22 gauge Tru-gauge™ and .032" Aluminum
- ASTM 283, 330, 331, 653 and 792
- UL 790 Class A Fire rated
UL 2218 Class 4 Impact (hail) rated
- Structural panel that will span up to 6'
- Custom lengths 1' to 45'
(For longer lengths, please inquire)
- Recommended minimum pitch 1:12 when used with field applied butyl mastic
- Long length flashings available up to 20'11"
- Panel is available in a wide variety of "Cool" baked on ArmorTech™ or "Cool" baked on Kynar 500® colors. Rusteel™ Plus (A606) and .032" Kynar 500® painted Aluminum
- Also available in 29 gauge Glacier White
- Easy-to-order standard and custom made trim and accessory packages available for specific project needs
- Color matched neoprene washered screws

| Allowable Live Load in PSF | | | Span In Feet (steel only) | | | | | |
|----------------------------|-------|-----|---------------------------|-------|-----|-----|-----|-----|
| SPAN TYPE | GAUGE | KSI | 2' | 2' 6" | 3' | 4' | 5' | 6' |
| SINGLE SPAN | 22 | 50 | 806 | 516 | 358 | 202 | 129 | 90 |
| DOUBLE SPAN | 22 | 50 | 806 | 516 | 358 | 202 | 129 | 90 |
| THREE OR MORE SPANS | 22 | 50 | 1008 | 645 | 448 | 252 | 161 | 112 |
| SINGLE SPAN | 24 | 50 | 636 | 407 | 283 | 159 | 102 | 71 |
| DOUBLE SPAN | 24 | 50 | 627 | 401 | 348 | 157 | 100 | 70 |
| THREE OR MORE SPANS | 24 | 50 | 784 | 502 | 358 | 196 | 125 | 87 |
| SINGLE SPAN | 26 | 80 | 545 | 349 | 242 | 136 | 87 | 61 |
| DOUBLE SPAN | 26 | 80 | 514 | 329 | 229 | 129 | 82 | 57 |
| THREE OR MORE SPANS | 26 | 80 | 643 | 411 | 286 | 161 | 103 | 71 |

MATERIAL SPECIFICATIONS

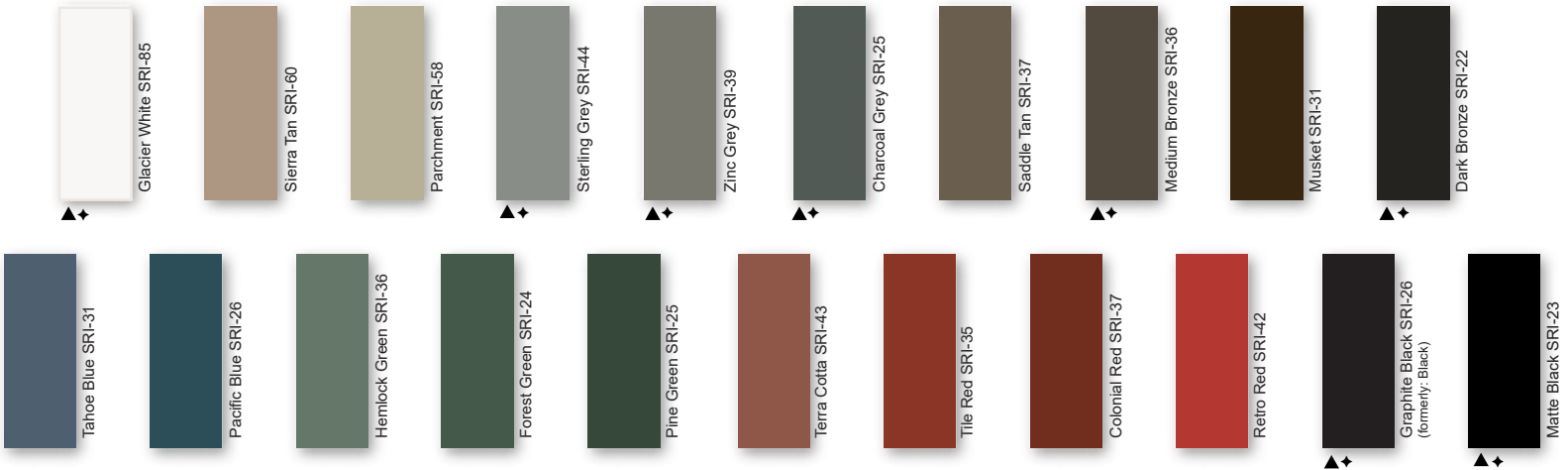
- 26 gauge ArmorTech™ Painted Steel .019" (Thickness prior to painting) G-90 Galvanized or AZ-50
- 24 gauge Kynar 500® Painted Steel .0236" (Thickness prior to painting) G-90 Galvanized or AZ-50
- 26, 24 & 22 gauge bare Zincolume® Plus, AZ-55 (No finish warranty – 25 yr. perforation warranty)
- ▲ 22 gauge Kynar 500® Painted Steel .029" (Thickness prior to painting) G-90 Galvanized or AZ-50
- ◆ .032" Kynar 500® Painted Aluminum
- 26 gauge bare G-90 Galvanized (No finish warranty – 25 yr. perforation warranty)
- 22 gauge Rusteel Plus™ (A606)
- Kynar 500® and substrate testing data available (See website)

STANDARD COOL ARMORTECH™ SMP COLORS
40-Year Residential Manufacturer's Limited Warranty

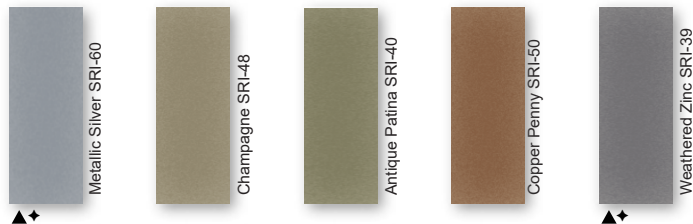


40-Year Residential / 20 and 30 Year Commercial Manufacturer's Limited Warranty

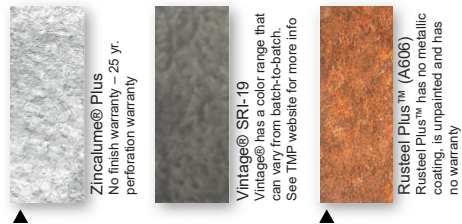
STANDARD COOL KYNAR 500® COLORS



PREMIUM METALLIC COOL KYNAR® COLORS



SPECIALIZED MATERIAL



These printed chips provide a close representation of the colors.

Metal samples are available upon request. Coatings are low gloss 10-15% sheen. SRI = Solar Reflective Index. SRI values listed above are in accordance with ASTM E 1980 and are based on actual testing. ***Oil canning is not a cause for material rejection***

| Standard Panels | | | |
|-----------------|-----------|----------|--------|
| Gauge | Color | LBS SQFT | LBS LF |
| 26 | ArmorTech | 1.02 | 2.92 |
| 24 | Kynar | 1.2 | 3.45 |
| 22 | ▲ | 1.51 | 4.33 |
| .032 Alum | ◆ | .56 | 1.62 |

