
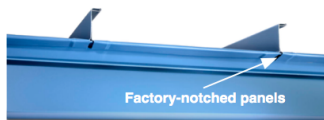




**KEY FEATURES**

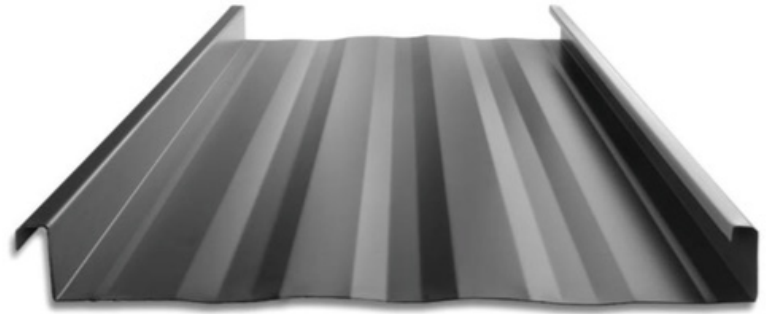
- 12" to 18" options available
- 24 & 22 gauge Tru-Gauge™ and .032" Aluminum
- Floating clip system: allows for expansion/contraction of panels in longer lengths
- 2" Mechanical seam rib, 90° or 180°: Factory notching available
- Factory injected Butyl sealant
- Structural panel that will span up to 5'
- Concealed fasteners: fasteners cannot leak
- Manufactured in Sacramento, CA & Salem, OR
-  - Code compliance UL Evaluation Report UL ER 25913-01
- UL580 Class 90 wind uplift, UL Class A fire rated
- UL Construction No. 90, 176, 180, 238, and 238 A-C, 435, 435 A, 437, 449, 451, 452, 487, 506, 506 A-C
- UL 580 Class 90 Wind Uplift, UL 790 Class A Fire rated and UL 2218 Class 4 Impact (hail) rated
- Dade PA 201-94 Class 90 Impact, 140 MPH Wind Uplift
- ASTM E-1592 - Structural uniform static air pressure  
ASTM 1646 - Water infiltration  
ASTM 2140 - Water infiltration  
ASTM 1680 - Air infiltration
- Weather tightness warrantly available  
(Contact TMP representative for details)
- 1/2:12 minimum pitch recommended  
(For lower pitches, please inquire)
- Standard panel lengths 4' to 60' - not notched  
Standard panel lengths 1' to 60' - notched  
(For longer panels, please inquire)
- Onsite roll forming available for long lengths
- Panel options: Striations, Accent Ribs, and Flat Pan
- Retro-fit systems available



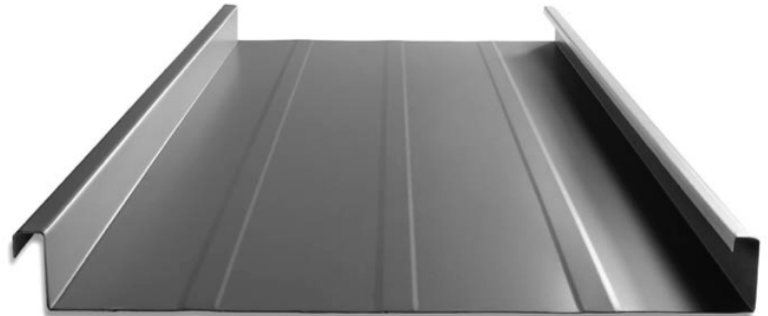
- Prevents crowning
- No visible screws required
- Sharp, professional appearance

**PANEL PROFILES**

12" to 18" coverage options



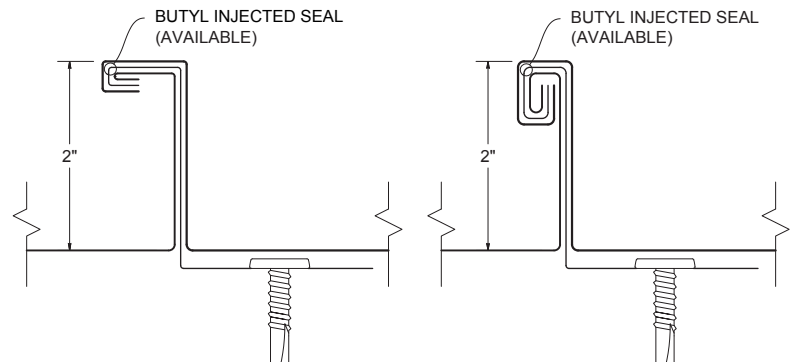
**STRIATIONS**



**ACCENT RIBS** 2 Accent ribs for 12" to 14-5/8" panel  
3 Accent ribs for 16" & 18" panel

**90° SEAM DETAIL**

**180° SEAM DETAIL**

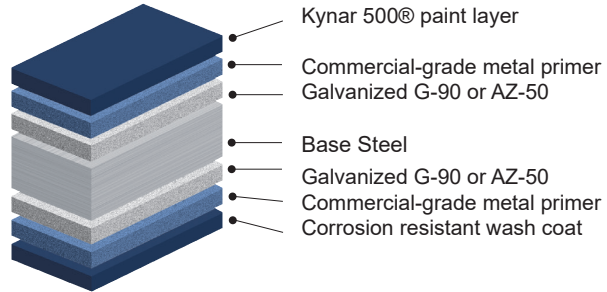


## MATERIAL SPECIFICATIONS

- 24 gauge Kynar 500® Painted Steel  
.0236" (Thickness prior to painting)  
Galvanized G-90 or AZ-50
- 24 gauge bare Zinalume® Plus AZ-55  
(No finish warranty – 25 yr. perforation warranty)
- ▲ 22 gauge Kynar 500® Painted Steel  
.029" (Thickness prior to painting)
- ◆ .032" Kynar 500® Painted Aluminum
- 22 gauge Rusteel Plus™ (A606)
- 16 and 20 ounce Copper  
(Please inquire)
- Kynar 500® and substrate testing data available  
(See website)
- "Oil canning" is an inherent characteristic of roof and wall products, and not a defect, which is not a cause for panel rejection

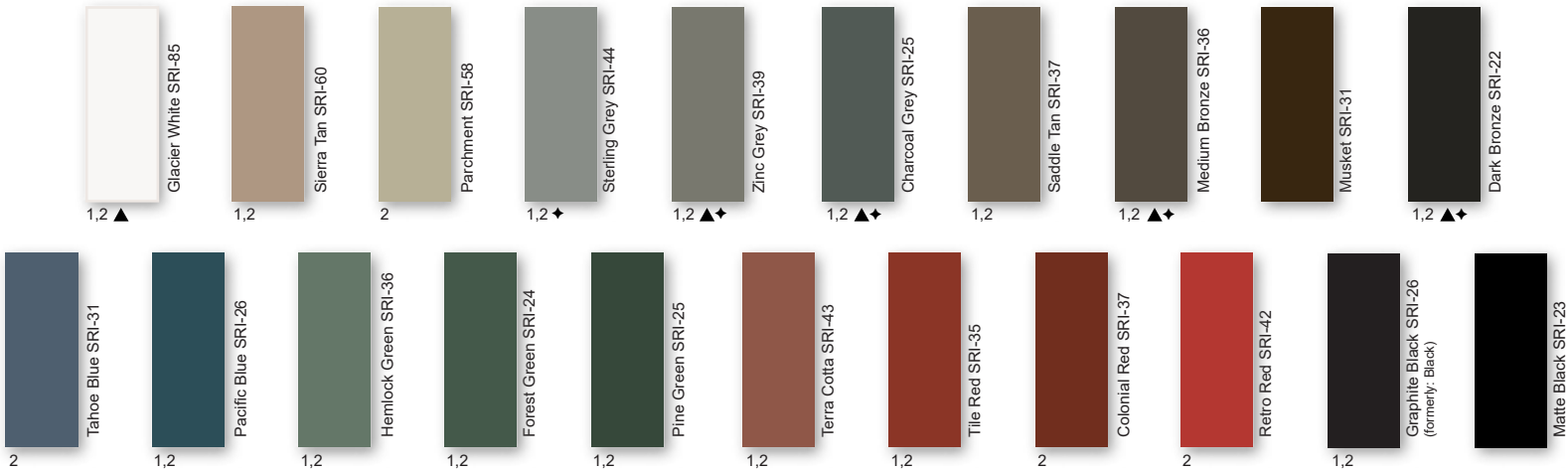
## KEY FEATURES

- 21 Standard Colors, 5 Metallic Colors and 4 Specialized Colors
- Kynar 500® Paint System - the ultimate in exterior durability and color retention
- "Cool" color pigments are specially designed to reflect infrared light, reducing heat gain to dwelling, and conform with ENERGY STAR® criteria
- Superior Quality, two coat, 70% resin finish, applied at a 1 mil. thickness
- 40 year residential paint warranty
- 20 and 30 year commercial paint warranty: Contact your sales rep. for warranty specifications

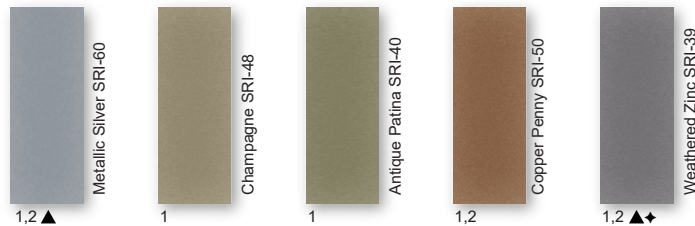


### 40-Year Residential / 20 and 30 Year Commercial Manufacturer's Limited Warranty

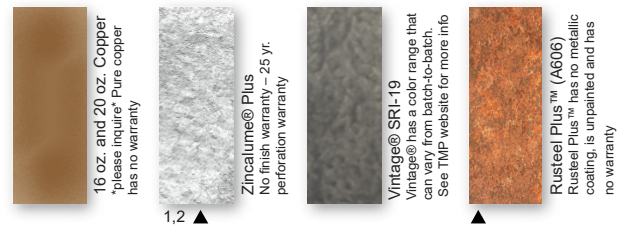
#### STANDARD COOL KYNAR 500® COLORS



#### PREMIUM METALLIC COOL KYNAR® COLORS



#### SPECIALIZED MATERIAL



These printed chips provide a close representation of the colors.

Metal samples are available upon request. Coatings are low gloss 10-15% sheen. SRI = Solar Reflective Index. SRI values listed above are in accordance with ASTM E 1980 and are based on actual testing.\*\*\*Oil canning is not a cause for material rejection\*\*\*

Standard Panels				
Width	Gauge	Color	LBS SQFT	LBS LF
14-5/8"	24	1	1.36	1.65
18"	24	2	1.28	1.93
18"	22	▲	1.61	2.42
15-3/8"	.032 Alum	◆	0.6	0.9

