

# Get closure

Custom Fit Foam  
Closure System

- **Less Money**  
Economically priced  
without sacrificing quality
- **Less Worry**  
Tests better than  
competitors  
and lasts longer
- **Less Cleanup**  
Pre-scrapped for quicker  
install and easier cleanup

*UV resistant and  
incredibly durable.*

Closure-Foam™ comes in 400 standard profiles, six types of foam and custom sizes that are easy to order. Designed to stay put, Marco's M63™ industrial adhesive eliminates blow away problems. The generous 1/4" adhesive bead can be applied to either the flat or the ribbed side of Closure-Foam and it even adheres in subfreezing temperatures and on wet surfaces.

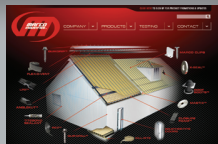
**CLOSURE-FOAM™**

Interlocking dovetails are also available to eliminate gaps, ensure a snug end-to-end fit and are available with or without adhesive. They ship pre-scrapped leaving you with less job site cleanup.

Closure-Foam is economically priced without sacrificing quality. Marco's crosslink polyethylene foam has a unique coating which gives it better UV resistance and better durability than the industry standard. Independent testing confirms Marco's 1.5 density foam provides better UV stability than competitive products with a 2.0 density.



One element of the Marco WEATHER-TITE™ SYSTEM



FOAM CLOSURES

SEALANTS

VENTILATION

FLASHING

DOORS

FASTENERS

UNDERLAYMENT

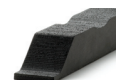


## SPECS & EASY INSTALL

See our installation animations online at [MarcoIndustries.com](http://MarcoIndustries.com)



**MASTIX**  
Butyl tape



**ANGLEKUT**  
Beveled foam closure

Installation is easy with Mastix and Anglekut

PROPERTY / TEST	STANDARD	UNITS	LD24 VALUE
Nominal Density - Skin/Skin	BS ISO 7214 1998	kg/m <sup>3</sup>	24
Cell Size - Typical Diameter	Internal	mm	0.3
Compression Stress-Strain: 10% compression	BS ISO 7214 1998	kPa	34
25% compression		kPa	53
40% compression		kPa	85
50% compression		kPa	118
Compression Set: 25% comp., 22hr, 23°C	BS ISO 7214 1998		
½ hr recovery: 25 mm cell-cell		% set	13
24hr recovery: 25 mm cell-cell		% set	5
Compression Set: 50% comp., 22hr, 23°C			
½ hr recovery: 25 mm cell-cell		% set	27
24hr recovery: 25 mm cell-cell		% set	19
Tensile Strength	ISO 7214 1998		
Tensile Elongation		%	130
Tear Strength	BS EN ISO 8067 1995	N/m	495
Shore Hardness OO Scale: 10mm cell/cell thickness	ISO 868 1985	OO	50
Recommended operating temperature range*	Internal	°C	+100 max / -70 min
Thermal Conductivity - mean temp of 10°C	ISO 8302 1991	W /m.K	0.0392
Flammability: Automotive	FMVSS.302 - Burn rate	<100mm/min.	Pass: 12 mm & thicker
Flammability: Horizontal Burn Rate	ISO 7214 1998	mm/sec	5mm thick / 2.1
		mm/sec	13mm thick / 1.5
Durometer	50	Shore OO	
Water		lbs/ft3	5%

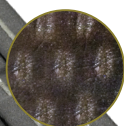
Closure Foam represents yet another Marco Industries development in bringing you innovative, higher quality, and more economical products for the building industry.

## Marco Weather-Tite® System Advantage

With Marco's Rapid Response™ get more of what you need faster and easier. Take advantage of free shipping with low minimum orders. Marco - we're big on customer service and small on hassle. Build it smart. Buy it smarter.

[MarcoIndustries.com](http://MarcoIndustries.com)

1.800.800.8590



This protective coating forms under extreme pressure during the process of manufacturing and shields the product from harmful UV rays.



**MARCO INDUSTRIES™**